

Melksham

rail user group

1st September 2020

<http://www.mrug.org.uk>

info@mrug.org.uk

01225 708225 or 07974 925 928



Dear Members and Supporters,

Melksham Rail User Group newsletter

Issue 6 - September 2020

New this month ...

* click on any item in the list of contents to jump straight to an article

* visit <http://melksham/taxi> - clickable phone links to Melksham taxi services

* visit <http://melksham/trains> - train departures including live running data

... and they all work from phone, tablet, laptop and desktop computers too!

This is a the final (v1.0) edition



Taxi ^ | Train v



Table of Contents

Melksham Public Transport Diary - September 2020.....	2
How are the trains and buses doing - are they safe?.....	3
How are the trains and buses doing - Are they busy?.....	3
Notice period for changes.....	4
What can our volunteers do?.....	4
Conditions on Station adoption Groups such as MRUG.....	5
Events.....	6
Looking forward.....	6
How is progress on the car park and hub?.....	7
Restart - what shape Melksham's train service?.....	7
Web site.....	9
Please take your own trip to Swindon.....	9
Melksham Train Timetable, 9.2020.....	12
Bus Route 271/272/273, 1 st September 2020.....	14
Bus Route x34 – as of 1 st September 2020.....	16
National Express, 68 and 69 – September 2020.....	17
Melksham Town Bus – September 2020.....	18
Melksham Rail User Group to become Melksham Transport User Group?.....	20
Train running report for August 2020.....	20

Melksham Public Transport Diary - September 2020

Updated timetables for all public transport services may be found in this document.

There are changes to the trains and the x34 (Chippenham, Trowbridge, Frome) buses

* From 1st September, **the 07:20 (Monday to Friday) train to Swindon resumes**; it carries on from there to Gloucester (rather than Cheltenham Spa where it terminated until March). The **06:36 (Monday to Friday) train to Westbury once again continues from Westbury to Southampton Central**

* From 1st September, there is a **revised timetable on bus route x34** and route 555 resumes - though the latter is now for school traffic only.

* From 1st September, **Senior Bus Passes** will only be accepted for travel without charge after 09:30 on Mondays to Fridays, as well as all day on Saturdays and Sundays. These passes apply to bus services anywhere and do not offer any entitlement to free or reduced train travel to or from Melksham.

* On Saturday 5th and Sunday 6th September, the **railway line is closed for engineering works for the two days** through Melksham and Great Western Railway will be running rail replacement buses; if you are travelling to Swindon, a change of buses will be necessary at Chippenham, with an overall journey time of over an hour.

* On Saturday 12th and Sunday 13th September, trains will run as they have during August - that is with some gaps remaining in service

* On & from Saturday 19th & Sunday 20th Sept, **a full weekend train service resumes**.

Throughout September (unless otherwise notified in times of rapid change), **passengers are welcome to use our public transport provided they are not isolating, but must wear face masks while on public transport and using enclosed passenger facilities such as railway station and town centre waiting shelters**. There are exemptions for children under the age of 11, and for certain other groups with reasons why they cannot wear masks.

Passengers are asked to space out when waiting for, joining and leaving public transport, and on board during their journey, and advised to clean their hands / sanitise regularly. Please use a contactless means of payment if you can to help reduce the risk to staff and others. If you have a choice between services and know which is likely to be the quieter, please choose it.

Note that on 3 Sundays in October, trains will be replaced by buses due to engineering works

Other notable September dates in Melksham Public Transport

Stop Press – 19:30 on 8th September – Melksham Area Board includes an update for Melksham residents on the Melksham Station Hub by Paul Johnson, Chair of TransWilts CIC. <https://cms.wiltshire.gov.uk/ieListDocuments.aspx?MIId=13146&x=1>

On Wednesday 16th September, at 19:30 our online meeting via Zoom ... set up and informal chat from 19:00, Joining details via <http://www.passenger.chat/23965> . All welcome

The Emergency Measure Agreements under which our trains are running at present expire on 20th September. **Stop Press – just extended to June 2021**

Our diary still lists a meeting of the regional RailFuture branch on 26th September - <http://www.passenger.chat/23794> and we will update that URL as we get more news. No scheduled public meetings of the West Wilts Rail User Group, nor of the TransWilts CRP, as we go to press. TravelWatch SouthWest meets early October, almost certainly online.

How are the trains and buses doing - are they safe?

A year ago, the GWR passenger forum ran a survey of "Which are the most important factors of a train journey to YOU?" and only 33% of respondents chose "safety" as an issue, compared to 79% for reliability, 72% for frequency, 71% for capacity and 69% for cost. See <http://www.passenger.chat/22054>. But things have changed in a year and the question "how safe is it to use public transport" has become a frequent one.

Concerns are not only over the risk of catching Coronavirus when using public transport, but also over other safety issues raised by the fatal accident at Stonehaven during August (the first passenger death in a railway accident for over a decade) and the spectacular derailment and fire of a freight train at Llangennech in the last few days.

The Rail Safety and Standards Board has reported on the Covid-19 risk in the late last week

"Passengers can be a lot more confident about travelling by train safely according to RSSB – with the risk of Covid-19 infection being less than 0.01% on an average journey.

"Rail safety experts worry that people may be assuming the roads offer a less risky alternative during the pandemic, when in fact trains are safer and greener."

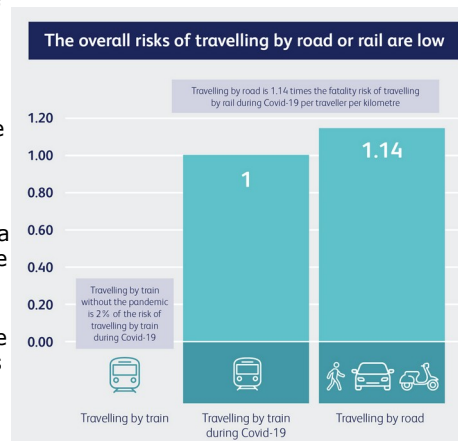
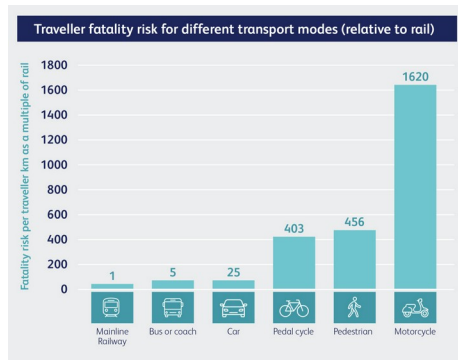
Link to the RSSB report -

<https://www.rssb.co.uk/Insights-and-News/News/Rail-still-safer-than-road-during-Covid-19> Or <http://www.passenger.chat/23959> for a shorter link

There are, inevitably, a number of assumptions made and projections in comparing transport modes - the RSSB itself refers to distance travelled, time taken, and rates per journey and per km which make comparison difficult. But basically - unless you are in a very vulnerable group indeed, the risk to you in your journey by public transport is less than the risk to you in making the same journey by car. Risks to others - such as passing on what you pick up on the train, or hitting someone with your car - are very different in nature and almost impossible to compare and in all cases the risks are very low indeed.

Risk from rail accident are astonishingly low - and indeed bus travel has only a tiny fraction of the accidents that cause injury than private vehicle travel. The headlines from Stonehaven show how just rare that event was; later in August, four people died in a road accident between Chippenham and Calne and whilst we heard about it in Wiltshire, it didn't make the news media to the same degree, nor stick there as long. The hurt to those who lost loved ones is just as real and long-lasting though.

So concluding - don't be put off public transport over safety worries. But, please, you can do your bit by travelling at quieter times and on quieter routes, wearing a face mask if you possibly can (even if technically exempt), socially distancing, etc.



How are the trains and buses doing - Are they busy?

From a MELKSHAM RAIL viewpoint, GWR report that passenger traffic on the trains in two thirds down - one of the better performing lines in the area, but with excellent capacity on most trains. Evidence across the rail network also suggests a far greater reduction in morning peak traffic than at other times of day - a lesser fall in the evening peak, with (?) many office staff going in later and doing a short day / working from home much of the time. Anecdotal / observation at Melksham suggests we're nothing exceptional and that traffic is now much more even across the day than it was in the past. That could be excellent news if maintained as a pattern for long term efficiency of operations

From a MELKSHAM BUS viewpoint, observing a few buses has shown them very quiet at all times. Faresaver reported passengers back up to 40% of pre-Covid levels on some routes, but we suspect that Melksham routes have not yet reached those levels. There is significant school traffic on some routes, so we would expect buses on many Melksham routes to increase significantly during September - quieter times will be between 9 a.m. and 3 p.m.

Notice period for changes

The rail industry has been required to give 12 weeks notice of timetable changes and changes for planned engineering in recent years. Sometimes it's failed to do so and only notified changes 6 to 8 weeks ahead. Recently, those notice periods have not been applied and at time the timetable for the one week has only been published during the previous week, with weekend schedules just a few days out.

The bus industry requires up to 72 days notice of timetable changes (though they are often made public only at 28 or 42 days). Once again, changes are happening on a far shorter timescale than "required" at present, but we have been moving to knowing a little further ahead than just a few days.

I expect the timetables in this newsletter to "hold" for September, but that is an expectation and not something that's guaranteed. All buses are back now, as are all trains from 15th September, except one each way - 19:15 at Melksham (southbound) and 20:20 at Melksham (Northbound) on Monday to Friday.

What can our volunteers do?

Melksham Rail User Group officers and other volunteers would LOVE to ...

- clear rubbish at the station if they see it
- talk with passengers (socially distanced, of course) to learn and to inform
- update notices on a regular basis
- tackle the jungle in the planter
- make leaflets available at the station and hand out newsletters
- stand on the platform and count passengers on and off trains to help keep us informed
- survey current passenger, again with a view to helping us understand what's needed.

But sadly, none of these things is allowable for us at present as we follow the rules set out by Great Western and supplied to us by the TransWilts CRP (shared here on the next page). We understand it's done for safety but it's very frustrating for us too, and especially when we receive criticism from others for not undertaking these tasks.

We overlap on some things (such as litter picking) with rail staff, and with employees and volunteers of companies working with the railway with a wider remit than station adoption. Clearly, all the rules do not apply to all of them (we see litter picked and leaflet racks populated) but we have concluded that - until we are otherwise advised, we have to abide by the rules set for us and hundreds of other station adoption groups.

Please ... help us help you as best we can. Keep us informed (you are doing for the most part!) and please put your rubbish into the rubbish bags at the station. Again, you are doing for the most part and THANK YOU.

What we CAN do ...

- keep users informed, via online media, local newspapers, & events away from the station
- answer questions / queries and consultations
- liaise with the local CRP, Councils, rail industry
- support our members and
- look forward

Our meeting on 16th September is *primarily* online – <http://www.passenger.chat/23965>

Conditions on Station adoption Groups such as MRUG

This document from ... **Great Western Railway, Milford House, 1 Milford Street, Swindon, SN1 1HL**, GWR.com

Rules for station adoption during the COVID-19 pandemic. Version 2, 10 August 2020

This document sets out initial steps for some station adopter and volunteer activities to resume.

Overview

As the Government ease lockdown restrictions and allow leisure travel by public transport to resume it must be remembered that this in turn may see an increase in train travel and the number of passengers using stations.

To minimise any potential for a 'second wave' of infection through unnecessary interaction the following requirements for station adoption activities MUST be adhered to until further notice.

It must be acknowledged that adoption activities at some locations will remain suspended where the appropriate measures cannot be maintained.

A resumption of normal station adoption activities will only be possible once the COVID-19 Alert Level has reached Level 1.

General principles

- * Any station adoption activity must strictly abide by the Government's guidance on social distancing and comply with the requirements of this document. GWR reserve the right to suspend indefinitely any activities that are unable to meet the requirements
- * Station adoption activities must be limited to one day a week and in alignment with the Government's guidance on outdoor activity
- * Station adoption activity work areas must be segregated from others using the station
- * Station adoption activities are limited to light gardening activities only such as weeding
- * No more than two station adopters can undertake activities at any one time
- * Face coverings and GWR issued high visibility vests must always be worn when station adoption activities are being undertaken
- * In addition to this document, all adopters must continue to comply with the usual guidance and regulations relating to their activities at stations
- * If any work is being undertaken at your station by railway personnel, or their contractors, then no station adoption activities are to be carried out at the same time
- * Any group who is part of a national organisation should also follow any additional guidance as set out by them
- * Government guidance must always be followed, including any local lockdown restrictions that are introduced

Interaction with Station Colleagues

Minimal interaction should be undertaken with station colleagues and in accordance with social distancing requirements. Where a station is staffed for part of the day activities should only be undertaken once the GWR colleague/s has departed. Activities are not permitted during the morning and afternoon peak periods and are only permitted during daylight hours.

Before and after works

All adopters must advise station colleagues of their presence or sign in and out with the Station Manager or Duty Station Manager either in person or via phone. Adopters must bring hand sanitiser to the station and use this before and after adoption work.

Consideration for others

When carrying out activities at stations, social distance must be observed between adopters and other people at the station, as per Government guidance. Adopters must give priority to the movement of passengers and stop work if social distancing requirements cannot be complied with.

Undertaking work

Work is limited to light gardening activities only, such as weeding. No cleaning of hard surfaces such as poster frames, doors, windows and signage is to take place. No litter picking activities are to take place.

Gardening

If tools are to be shared between station adopters, they must be wiped clean first. Adopters must always bear in mind social distancing and keep space clear for others to move around the station. This may mean that adopters must pause during their work and move to a place of social distance to allow the flow of passengers around the station, especially when train services arrive/depart.

Community noticeboards and artwork

No work should be undertaken on these activities until further notice.

Book swaps and group produced leaflets

These should be removed from stations/put away until further notice.

Non-GWR areas

Any activities undertaken as part of agreed work on Network Rail stations and Network Rail land must abide by the guidance of that organisation.

GWR maintains the right to renew these rules, as well as instruct any adoption group to stop its activities if these are not followed. This document was issued on Monday 10 August 2020 and will be continually reviewed in accordance with changes in the COVID-19 Alert Level and accompanying Government and National Rail guidance. The requirements of this document will remain in force until otherwise advised.

We very much look forward to revisions of the rules above in due course to allow us to resume further activities

Events

We were sad to see summer events such as the Imber bus day get cancelled this year

We are checking with GWR and TransWilts, but will probably decide to cancel Santa's visit in person on 13th December. Regulations at the time allowing, we will be encouraging our regular customers to take public transport trips for days out in the preparation for and run up to Christmas

Our 16th September meeting will go ahead online – please get in touch if you are unable to join via Zoom and we'll help find another way if we can.



Scenes missing in 2020 – but we hope to be back with events in 2021!

Looking forward

We look to the following including elements of the master plan over coming months and years.

- Evening trains – see following article
- Through services to Southampton (Central and Airport)
- Double track or loop to allow hourly train service
- Northern Access to reduce walk and cycle routes by 500 metres
- Buses to the station to connect with residential and business areas
- Cafe, toilets, cycle hire

How is progress on the car park and hub?

Car parking is available in the TransWilts / Smart Parking operated hub car park - free for up to 30 minutes - web site at <https://melkshamhub.co.uk/car-parking/>. With rail passenger numbers only just recovering, there is plenty of space available, the car park is currently signposted for "Rail Passengers only". The extension is a few weeks behind schedule. TransWilts wrote on 20th August:

"We have visited the Melksham Hub site today. Sadly due to the recent weather conditions we are significantly behind schedule. Our British weather - excessive heat last week and now rain this week, has meant the trenches are currently flooded. In consequence the contractors running one to two weeks behind schedule. We have therefore made the decision to postpone our planned car park photo shoot event on Friday 28 Aug at 10am.

"As I'm sure you can understand we want to do the project justice so will reschedule the photo shoot once we are back on track and are confident we can show the completed car park works."

At the time of writing (31st August) the electric vehicle charging points are in place but fenced off and not yet commissioned, and work is clearly under way with the next phase, with work underway in stripping out the hub building for refitting as a cafe.

The car parking spaces just outside the station gate have been re-designated as short term stopping places for dropping off and picking up rail passengers only - a maximum stay of 20 minutes, and they are Great Western / APCOA operated.

Restart - what shape Melksham's train service?

At the height of the pandemic, passenger numbers on trains and buses were down below one in twenty (5%) of the norm; since then, numbers have risen and we're back to around one in three (or 1 in 2.5) of the norm - that's 33% to 40%. Need we be concerned for the economics of returning traffic back up to levels which were experienced "this time last year?"

Yes, and no. The decimation in April was orchestrated by official necessity, but as we head for the autumn, official necessity points towards getting children back to school and workers back into their offices. The shorter term return will not be 100% - far from it - and for some, things will never go back as they were. But take a look at projections made in February - http://www.mrug.org.uk/plan_railpassengers_20200224.pdf - of quarter of a million passenger journeys per annum as a very low figure a few years hence (and 600,000 being quite possible). Factor the issues together, and within a handful of years you'll get passenger journey numbers perhaps four times what was being achieved prior to lockdown. Sure, 600,000 may make the reader gulp, but 300,000 is quite reasonable and realistic. Our station is exceptional and although the future may look bleak for some, we are in a position to regrow and develop. Did you notice how Melksham's services (Monday to Saturday) survived virtually unscathed through lockdown and others were slashed back? We are not the only ones to have noticed the differences.

Now - patterns of travel have changed - they have changed over the years, and are changing rapidly at present. Melksham train services prior to lockdown comprised a historic 2 return trips each way per day and 6 extra round trips to provide travel at busier times, far more options, and to complete round trip opportunities lacking with just the 2 historic trains. The 6 round trips are running and the historic morning trips are back - those latter providing for school journeys on other parts of their journeys, and significant commuter opportunities from Melksham. The evening historic trains have NOT returned. And is that "not yet" or are they not expected?

The reasons for running the historic services outside the Swindon to Westbury corridor are in themselves now largely superceded. On the Stroud Valley from Swindon to Gloucester, an hourly through London train has removed the requirement for a local service every 2 hours during the day and evening, and south of Salisbury, an hourly "Romsey 6" service plus an hourly regional train have sucked passengers from that train in the Solent area. So it is no surprise that it's not back. But that leaves a hole through Melksham, enlarged because the extra round trips are timed to avoid its path. Let's see some times.

Pre-covid, trains from Swindon to Melksham ran at
17:36, 18:44 (that's the service in question) and 20:45
and trains from Westbury to Melksham ran at
16:25, 18:39 and 20:06 (that's the service in question)

Without the 18:44 from Swindon, there's a massive gap that puts passengers off risking a day out / office day relying on the train is they may be later home, and it kills London office trips. If you miss the 17:36, a train an hour later was great, and a three hour gap will lose the traffic it carried, the traffic it allowed by providing a safety net, and the outbound trips of all those passengers early in the day.

Without the 20:06 from Westbury, longer distance commutes / trips to the South and West, and indeed Bristol and Bath inbound connections, finish 90 minutes earlier and lose return (and outbound) trips - both those taken, and those which are held by passengers as "safety net" journeys.

The absence of the last train from Westbury, and the three hour gap in the evening 'peak' are both significantly detrimental. We appreciate that both journeys are part of a wider network of services, and that the Swindon to Westbury section may now be the only piece of the route with a current business case. We also note that the local train in the new timetable is being used less than efficiently because of being timed to support these phantoms, and not the trains that actually run for customers. So - a suggestion - accept the removal of the two historic trains and replace them with a forward looking single trains running somethings like

Proposed trains from Swindon to Melksham run at 17:36, 19:16, 20:59 and 22:45
and trains from Westbury to Melksham run at 16:25, 18:26, 20:06 and 21:54

The 05:33 train from Melksham - new last December, surprised us by carrying into double digit passenger numbers into Swindon already in the handful of months before lockdown, and the 06:36 which used to carry fresh air and perhaps 2 passengers a decade ago now carried two dozen on a typical pre-covid day. Further evidence of the evening out of the working day, signalling an enhanced requirement for evening provision too.

With a significant numbers of people working from home some / most of the time, commute numbers will drop. See earlier suggestions for numbers. But average length of the remaining commutes for these people may increase. Take our friend - let's call her Jo - living in Maidenhead and working in Canary Wharf at present. 5 days a week, she takes an hour and 40 minutes each way - a total of 1000 minutes travelling. But now she's only in the office 2 days a week and if she moves to "Marvellous Melksham", a two hour 30 minute journey reduces her travel time to 600 minutes, and she has better housing for the price, a welcoming community, excellent schooling, fresh air and beautiful countryside. These early morning and evening services are vital to Jo, and will bring income to the rail network far in excess of the element of her fare attributed to the local train.

Bright young people move ... from Melksham and from Devizes ... to London, to Milton Keynes, to Leeds, to Reading ... to wherever the jobs in an increasingly specialised world are located. But should those jobs be the more home based, the need to move closer to work and from family in order to reduce the daily travelling will be slashed. The same point as our Jo in Maidenhead - but the start of a social change - not just a blip, but a trend, and a levelling out.

Web site

Major update to the Melksham Rail User Group website for September – now much more demand responsive

Transport to, from and in Melksham

We encourage you to use public transport, cycling and walking for journeys to, from and within the Melksham area, but appreciate that not all journeys are practical by those means. [Why]

Trains - Buses - Coaches - Cycling - Walking - Taxis - Cars
User Group who's who - News - External links - **Emergencies**

Let's travel, safely, enjoyably and sustainably

Trains - Melksham Station
* Map and address of the station
* or on Google Maps
* 10 minutes walk from the Town Bridge

Schedule	on time?	platform	coaches	no. stops	train destination	Operated by
0533	✓	1	2	1	Chippenham (0542) & Swindon (0559)	GWR (2M09)
0636	✓	1	-	6	Trowbridge (0645), Westbury (0653), Dilton Marsh (0656), Warminster (0703), Salisbury (0723), Romsey (0754) & Southampton Central (0808)	GWR (2020)
0721	✓	1	-	5	Chippenham (0735), Swindon (0752), Kemble (0809), Stroud (0823), Stonehouse (0828) & Gloucester (0848)	GWR (2G81)
0753	✓	1	-	1	Chippenham (0802) & Swindon (0819)	GWR (2M13)

* connects at Chippenham and Swindon
* connects at Trowbridge and Westbury
* current timetable and connection map

* Prior booking not needed
* Trains by Great Western Railway
* Melksham Hub facilities
* Free cycle parking at the station

Melksham rail user group Community Rail Network MEMBER

Current timetables and advice
Bus and Train Timetables - September 2020
Covid Travel advice - September 2020

News and Upcoming
September 2020 newsletter (draft) [(here)]
Next meeting - 16.9.2020
(online for most participants)
but please get in touch before if you wish!

Melksham Public Transport - Newsletters
* September 20 Newsletter - [(here)]
* August 20 Newsletter - [(here)]
* July 20 Newsletter - [(here)]
* June 20 Newsletter - [(here)]
* May 20 Newsletter - [(here)]
* April 20 Newsletter - [(here)]

TransWits publications
2019/20 Annual Report (28.4.2020)
Korrr Bremse press release (27.4.2020)

New:

04:05 Not Secure - mrug.org.uk

Let's travel, safely, enjoyably and sustainably

Trains - Melksham Station
* Map and address of the station
* or on Google Maps
* 10 minutes walk from the Town Bridge

at	status	train to
0533	✓	Chippenham (0542) & Swindon (0559)
0636	✓	Trowbridge (0645), Westbury (0653), Dilton Marsh (0656), Warminster (0703), Salisbury (0723), Romsey (0754) & Southampton Central (0808)
0721	✓	Chippenham (0735), Swindon (0752), Kemble (0809), Stroud (0823), Stonehouse (0828) & Gloucester (0848)
0753	✓	Chippenham (0802) & Swindon (0819)

* connects at Chippenham and Swindon
* connects at Trowbridge and Westbury
* current timetable and connection map

* Prior booking not needed
* Trains by Great Western Railway
* Melksham Hub facilities
* Free cycle parking at the station

Please take your own trip to Swindon

Present advice is that with social distancing and facemasks, the train is just as safe to visit as a shop, and passenger numbers are low so that there's plenty of space for your independent journey. So that – although the Santa Trip is probably off – we're suggesting you might like to take your family up to:



Designer Outlet

– 15 minutes from the station, re-opened

Oasis leisure Centre

– re-opened, requires prebooking

Town Centre shops

– 10 minutes from the station also open

STEAM - Museum temporarily closed.

Be Considerate | Be Patient | Be Safe

Centre Etiquette

Keep 2m apart

Wash Hands

Sensible crossing is permitted

Only 1 Visitor group in lift

Train fare, off peak day return to Swindon - £7.80 for adults, £3.90 for children aged 5 to 15. 34% off for groups of 3 or more adults (pay on the train and ask for "Groupsave").

Suggested trains from Melksham at this fare:

10:02 and 12:32 on Monday to Friday

07:53, 10:21 and 12:21 on Saturday

08:37 and 11:00 on Sunday

The journey takes between 25 and 30 minutes. Tickets valid for return on any train the same day – here are some examples from Swindon:

13:14, 15:14, 17:36 and 20:45 on Monday to Friday

13:05, 15:05, 16:02, 17:34, 19:34 and 21:07 on Saturday

13:41, 15:39, 17:45, 19:27 and 21:10 on Sunday

% - starts mid September. All trains replaced by buses on 5th and 6th September.

Melksham Station is just 10 minutes walk from the Town Bridge. There is also plenty of parking available at the station – see <https://melkshamhub.co.uk> for charges and other details.

Timetables for all Melksham Public Transport, and an advice sheet and index, are online at <http://melksham.go> and attached to the end of this newsletter

Melksham Public Transport – as at 1st September 2020
correlated by Melksham Rail User Group

MRUG timetable sheet 1 of 5, 1.9.2020

Sheet 1: This index and general travel advice

Sheet 2: Swindon – Chippenham – Melksham – Trowbridge – Westbury (GWR)

Sheet 3: Bath – Melksham – Devizes (Bus 271, 272, 273)

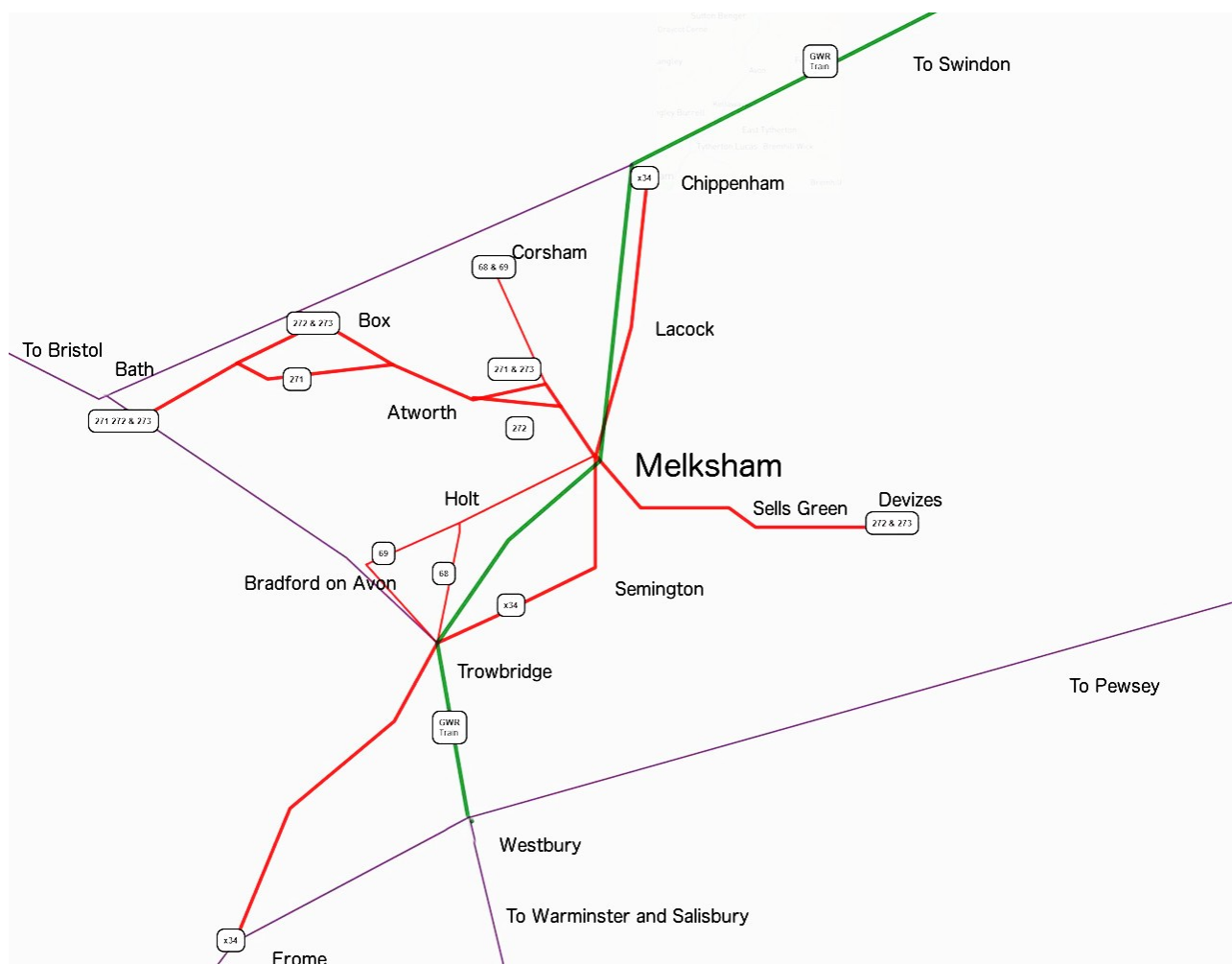
Sheet 4: Chippenham – Melksham – Trowbridge – Frome (Bus x34)

Corsham – Melksham – Bradford-on-Avon – Trowbridge (68 & 69)

Frome – Melksham – Swindon – Heathrow – London (National Express)

Sheet 5: Melksham Town Bus (Routes 14 and 15)

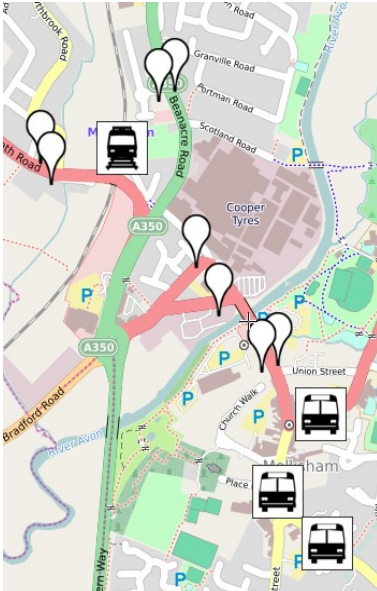
Marlborough – Calne – Melksham – Bath (Royal United) (x76)



Data on these sheets has been checked as of the date on the top of each sheet, but is supplied "Errors and Omissions Excepted". At the current time, timetables are changing frequently and we suggest you check online for an update prior to travelling. Timetable at <http://melksham.go>

Melksham
rail user group





Most buses call at the Market Place. Exceptions:

- * National Express for London calls on **Spa Road**
- * Service 14 for Melksham Forest from **Lowbourne**
- * Service x76 calls in **Lowbourne**

Trains call at Melksham Station - a 10 minute walk from the Town Bridge

Main stops – bus and train symbols. Some buses also call at other town stops indicated by pushpins

Information correlated by Melksham Rail User Group
<http://www.mrug.org.uk>. Twitter – MelkshamRUG
info@mrug.org.uk 0797 4 925 928

Let's travel safely this summer



Travel at
quieter times



Wash your
hands



Wear a face
covering

HM Government NHS

Help keep our buses safe

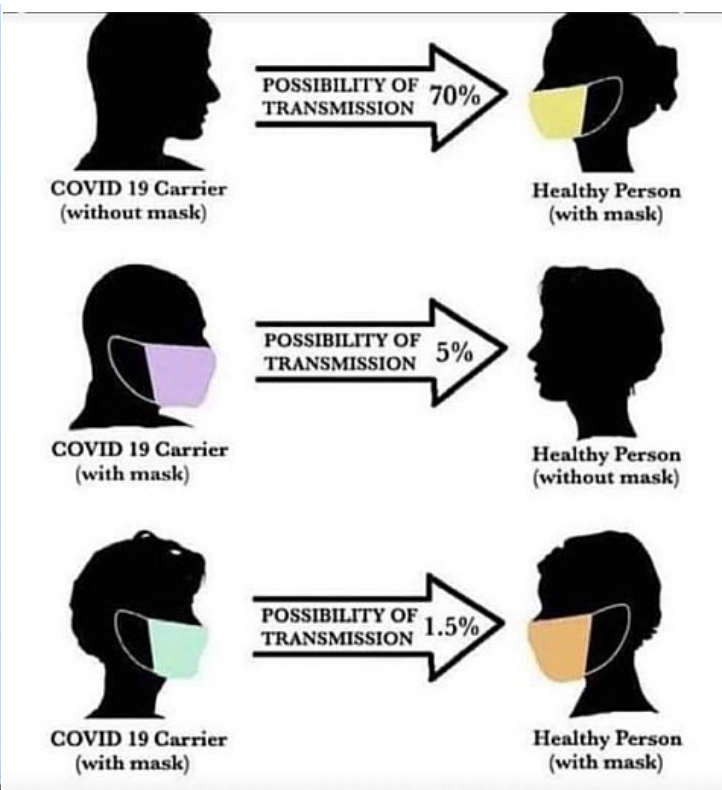
You must wear a face covering on public transport

Take a window seat, avoid standing and leave space in front and behind you.

Please be patient and wait for passengers to get off before you board a bus

Do not stand or queue in the aisle or next to the bus driver

STAY ALERT! CONTROL THE VIRUS! SAVE LIVES!



Melksham Train Timetable, 9.2020

... to Taunton, Exeter and the South West

... to Warminster, Salisbury, Southampton and Portsmouth

... to Stroud, Gloucester and Cheltenham

... to Newport, Cardiff and Swansea

... to Bath Spa and Bristol Temple Meads

... to Bradford-on-Avon (ONLY via change at Trowbridge)

<http://www.mrug.org.uk>

info@mrug.org.uk

Online timetable:

<http://melksh.am/go>



Monday to Friday throughout September 2020

Westbury	05:17	07:04	07:37	09:45	12:16	14:16	16:25	18:39
Trowbridge	05:23	07:11	07:43	09:51	12:22	14:22	16:31	18:45
Melksham	05:33	07:21	07:53	10:02	12:32	14:32	16:41	18:55
Chippenham	05:43	07:36	08:03	10:14	12:42	14:42	16:51	19:05
Swindon	05:59	07:52	08:19	10:34	13:01	15:01	17:08	19:21
		GCR						

Swindon	06:11	08:44	11:05	13:14	15:14	17:36	20:45
Chippenham	06:27	08:59	11:20	13:29	15:29	17:51	21:00
Melksham	06:36	09:09	11:30	13:39	15:39	18:01	21:10
Trowbridge	06:46	09:18	11:39	13:48	15:48	18:10	21:19
Westbury	06:53	09:25	11:46	13:55	15:55	18:17	21:26
SOU							

SOU - To Southampton Central

Saturdays from 19th September

on Saturday 5th September, trains are replaced by buses

Westbury	07:37	08:35	10:05	12:05	14:07	15:00	16:32	18:35
Trowbridge	07:43	08:41	10:11	12:11	14:13	15:06	16:38	18:41
Melksham	07:53	08:51	10:21	12:21	14:23	15:16	16:48	18:51
Chippenham	08:05	09e05	10b37	12b37	14c37	15c32	17c05	19c05
Swindon	08:24	09:24	10:56	12:56	14:56	15:48	17:24	19:24

Swindon	08:46	11:05	13:05	15:05	16:02	17:34	19:34	21:07
Chippenham	09:02	11:22	13:22	15:23	16:17	17:49	19:49	21:22
Melksham	09:11	11:31	13:31	15:33	16:27	17:59	19:59	21:32
Trowbridge	09:25	11:41	13:40	15:42	16:36	18:08	20:08	21:41
Westbury	09:33	11:49	13:46	15:49	16:43	18:16	20:16	21:48

Additionally, the 08:46 runs earlier that day.

c - arrives 5 minutes earlier

e - arrives 4 minutes earlier

Sundays from 20th September

		WEY													
Warminster	08:11							Swindon	09:12	11:41	13:41	15:39	17:45	19:27	21:10
Dilton Marsh	08:16							Chippenham	09:27	11:56	13:56	15:54	18:00	19:42	21:25
Frome	—	12:32	16:41				Melksham	09:37	12:06	14:05	16:04	18:10	19:52	21:35	
Westbury	08:20	10:44	12:43	14:47	16:50	18:35	20:18	Trowbridge	09:46	12:15	14:14	16:13	18:19	20:01	21:44
Trowbridge	08:26	10:49	12:49	14:52	16:55	18:41	20:22	Westbury	09:52	12:21	14:21	16:20	18:26	20:09	21:51
Melksham	08:37	11:00	12:58	15:02	17:06	18:51	20:34	Frome			14:30	16:29			
Chippenham	08:47	11:12	13:07	15:13	17:18	19:01	20:44								
Swindon	09:03	11:29	13:24	15:29	17:35	19:17	21:00	WEY							

Trains replaced by buses on 5th September. Through Weymouth trains do not run on 12th.

Trains operated by GWR – <https://www.gwr.com>

E&OE 1.9.2020 v1.0

Let's travel safely this summer



Travel at
quieter times



Wash your
hands



Wear a face
covering

Melksham Station is just a ten minute walk from the Town Bridge, on Station Approach which is in the fork between the Bath and Chippenham Roads.

An underpass for pedestrians and cycles ensures that people on foot do not have to cross any major roads between the town and the station. Sheltered cycle space is provided at the station. You can also take your cycle on the train.

Some adult fares from Melksham:

Day return to Swindon £10.50 (£7.80 after the 07:53, all day at weekend)
Day return to Westbury £4.90 (£4.10 after the 06:36, all day at weekend)
Day return to Bristol Temple Meads £12.40
Day return to Clifton Down £12.60 (£10.50 after the 07:53, all day at weekend)
Children under 5 - free of charge. 5 to 15 years - half fare.
Groupsave (a third off for groups of three or more) on off peak fares.
If you hold a railcard, railcard discounts are available on the quoted fares.

A ticket machine is available at Melksham Station or you can book ahead online.

Car Parking at Melksham Station – The TransWilts Community Interest Company lease the site from Wiltshire Council. Smart Parking manage the car park. Queries should be addressed to <https://www.smartparking.com/contact> or <https://melkshamhub.co.uk/car-parking/>

30 minutes	£0.00
1 hour	£0.30
2 hours	£0.60
3 hours	£0.90
4 hours	£1.20
5 hours	£1.50
Daily up to midnight	£2.50
Daily after 10am up to midnight	£2.00
24 hours	£3.60
Weekly (pay 5 days, park 7 days)	£12.50
Weekend daily rate to midnight	£2.00

Season tickets Payment for season tickets is only available via the RingGo app

Monthly	£50.00
Quarterly	£145.00
Annually	£400.00
Electric vehicle charging points	Parking tariff applies

TransWilts write: "Melksham Station's car parking will expand to 52 parking spaces. Up to 20 minutes car parking is free at the platform in the short stay spaces or 30 minutes in the Hub car park. There are designated disabled spaces adjacent to the platform. Motorcyclists can park free of charge in the designated area. We are installing lighting and CCTV coverage for both the car park and café areas. **Parking charges were introduced from 31st July.**

We're pleased to say our flexible parking tariffs are competitive compared to charges at other local stations. Parking is 30p per hour and an annual season ticket provides year round 5-day-a-week parking for £1.60 a day. The ticket machines in both the south and north car parks will take cash and

a credit/debit card. We've installed Automatic Number plate Recognition Cameras. These will record entry and exit times to check for over-stays parking can also be paid for using the RingGo App. RingGo is particularly handy if you need to extend your parking when a returning train is delayed or cancelled. Cheaper than incurring a parking ticket!

We will provide parking spaces for electric car users. This will be strictly reserved for electric car drivers for recharging use only."

Bus Route 271/272/273, 1st September 2020

Bath – Melksham - Devizes

correlated by Melksham Rail User Group, operated by Faresaver

MRUG timetable sheet 3 of 5, 1.9.2020



Monday to Friday

Buses towards Devizes																WCS			
271	272	271	272	271	272	271	272	271	272	271	272	271	272	271	272	273	273	273	273
			0742			0845	0915	0945		15	45			1615	1645	1715	1745	1815	1845
			↓			↓	0933			33				1633	↓	1738		↓	↓
						0935	↓			35	↓			1635	↓	1740		↓	↓
					0800	0905	↓	1005		42	05			↓	1707	↓	1810	1838	1906
			0807		0912	0942	1012			42	12			1642	1714	1747	1817	1845	1913
			0811		↓	0946	↓			46	↓			1646	↓	1751	↓	1849	1917
			0815		0915	0950	1015			50	15			1650	1717	1755	1820	1853	1921
										02	25			1702	1727	1807	1830	1903	1928
0640	0720	0730	0825	0902	0925	1002	1025			08	↓			1708	↓	1813	↓	1909	1933
0645	↓	0736	↓	0908	↓	1008	↓			14	31			1715	1733	1820	1836	1916	1940
0650	0725	0742	0831	0914	0931	1014	1031			36				1720	1738	1825	1841	1921	1945
	0730		0836		0936		1036			44				1728	1738	1825	1841	1921	1945
	0740		0850		0944		1044							1728	1746	1832	1848	1928	1951
	C		C		C		C			C									
Buses towards Bath																WCS			
271	272	271	272	271	272	271	272	271	272	271	272	271	272	271	272	273	273	273	273
			0710		0834		0932		1032		32					1532		1632	1732
			↓		0841		0939		1039		39					1539		1639	1739
										08	↓					1508	↓	1608	↓
			0645	↓	0736	↓	0908	↓	1008	↓	↓					1514	1544	1614	1644
			0650	0722	0742	0846	0914	0944	1014	1044						↓	↓	↓	↓
																↓	↓	↓	↓
			0657	0730	0750	0854	0924	0954	1024	1054						1524	1554	1624	1654
			0702	0737	0757	0901	0931	1001	1031	1101						1531	1601	1631	1701
			0706	↓	0801	↓	0935	↓	1035	↓						1535	↓	1635	↓
			0710	0740	0805	0904	0939	1004	1039	1104						1539	1604	1639	1704
			↓	0748	↓	0911	↓	1011	↓	1111						↓	1611	↓	1711
			0717		0812		0946		1046							1546	↓	1646	↓
			0719	↓	0814	↓	0948	↓	1048	↓						1548	↓	1648	↓
			0737	0814	0840	0936	1010	1033	1106	1131						1606	1631	1708	1733
											06	31							

WCS – Wiltshire Council Supported Service

C – Onwards connection to Urchfont (service 270)

Saturday

Buses towards Devizes

	272	271	272	271	272	271	272	271	272	271	272	WCS	WCS	WCS	WCS
Bath Bus Station Bay 9			0845	0915	0945	1015	1045			15	45	1615	1645	1715	1745
Bathford High Street			↓	0933	↓	1033	↓			33	↓	1633	↓	1737	↓
Kingsdown The Swan			↓	0935	↓	1035	↓			35	↓	1635	↓	1739	↓
Box Northey Arms			0905	↓	1005	↓	1105			42	05	↓	1705	↓	1807
Atworth Post Office Lane			0912	0942	1012	1042	1112			42	12	1642	1712	1746	1814
Whitley Pear Tree			↓	0946	↓	1046	↓			46	↓	1646	↓	1750	1818
Shaw Church Farm			0915	0950	1015	1050	1115			50	15	1650	1715	1754	1822
Melksham Market Place	0800	0902	0925	1002	1025	1102	1125			02	25	1702	1725	1804	1832
Melksham Forest Tower Road	↓	0908	↓	1008	↓	1108	↓			08	↓	1708	↓	1810	1837
Bowerhill Kingfisher Drive	0806	0914	0931	1014	1031	1114	1131			14	31	1715	1731	1817	1844
Sells Green Three Magpies	0811		0936		1036		1136			36		1720	1736	1822	1849
Devizes Market Place	0819		0944		1044		1144			44		1728	1744	1830	1857
			C		C		C							1950	2047

Buses towards Bath

	271	272	272	271	272	271	272	271	272	271	272	WCS	WCS	WCS	WCS
Devizes Market Place Pelican		0743	0832		0932		1032			32		1532		1632	1732
Sells Green Three Magpies		0750	0839		0939		1039			39		1539		1639	1739
Melksham Forest Tower Road		↓	↓	0908	↓	1008	↓			08	↓	1508	↓	1608	↓
Bowerhill Kingfisher Drive	0707	0755	0844	0914	0944	1014	1044			14	44	1514	1544	1614	1644
Melksham Forest Church		↓	↓	↓	↓	↓	↓			↓	↓	↓	↓	↓	↓
Melksham Market Place	0715	0803	0854	0924	0954	1024	1054			24	54	1524	1554	1624	1654
Shaw Church Farm	0721	0810	0901	0931	1001	1031	1101			31	01	1531	1601	1631	1701
Whitley Pear Tree	0725	↓	↓	0935	↓	1035	↓			35	↓	1535	↓	1635	↓
Atworth Post Office Lane	0729	0813	0904	0939	1004	1039	1104			39	04	1539	1604	1639	1704
Box Northey Arms		0820	0911	↓	1011	↓	1111			↓	11	↓	1611	↓	1711
Kingsdown The Swan	0736	↓	↓	0946	↓	1046	↓			46	↓	1546	↓	1646	↓
Bathford High Street	0738	↓	↓	0948	↓	1048	↓			48	↓	1548	↓	1648	↓
Bath Bus Station Bay 9	0752	0840	0931	1008	1031	1106	1131			06	31	1606	1631	1706	1731

Sunday

Buses towards Devizes

	WCS	WCS	WCS	WCS	WCS	WCS
Bath Bus Station Bay 9		1110	1310	1510	1710	1910
Box Northey Arms		1127	1327	1527	1727	1927
Atworth Post Office Lane		1134	1334	1534	1734	1934
Whitley Pear Tree		1138	1338	1538	1738	1938
Shaw Church Farm		1142	1342	1542	1742	1942
Melksham Market Place	0950	1150	1350	1550	1750	1950
Melksham Forest Tower Road	0955	1155	1355	1555	1755	1955
Bowerhill Kingfisher Drive	1002	1202	1402	1602	1802	2002
Sells Green Three Magpies	1007	1207	1407	1607	1807	2007
Devizes Market Place	1014	1214	1414	1614	1814	2014
	U	U	U	U	U	

Buses towards Bath

	WCS	WCS	WCS	WCS	WCS	WCS
Devizes Market Place Pelican	0912	1112	1312	1512	1712	1912
Sells Green Three Magpies	0919	1119	1319	1519	1719	1919
Bowerhill Kingfisher Drive	0924	1124	1324	1524	1724	1924
Melksham Forest Church	0931	1131	1331	1531	1731	1931
Melksham Market Place	0938	1138	1338	1538	1738	1936
Shaw Church Farm	0945	1145	1345	1545	1745	
Whitley Pear Tree	0949	1149	1349	1549	1749	
Atworth Post Office Lane	0953	1153	1353	1553	1753	
Box Northey Arms	1000	1200	1400	1600	1800	
Bath Bus Station Bay 9	1020	1220	1420	1620	1820	

U - to Urchfont

WCS - Wilts Council Supported

19:12 Sunday from Devizes -
call at intermediate points to
Melksham only if required by
passengers joining in Devizes

Bus Route x34 – as of 1st September 2020

Chippenham – Melksham – Trowbridge - Frome

Operated by Faresaver

overleaf for other buses from Melksham to Trowbridge

MRUG timetable sheet 4 of 5, 1.9.2020

Monday to Friday

Buses towards Frome

Chippenham Bus Station Bay 5	0630	0720	0735	0830	0900	0930	1000	1030	1100	1130	1200	1230	1300	1330	1405	1435	1505	1535	1605	1635	1730
Chippenham Railway Station	▼	▼	▼	▼	▼	▼	▼	▼	▼	▼	▼	▼	▼	▼	1411	1441	1511	1541	1611	1641	1736
Chippenham Hospital	0633	0723	0738	0833	0903	0933	1003	1033	1103	1133	1203	1233	1303	1333	1415	1445	1515	1545	1615	1645	1740
Chippenham Sainsbury's	0636	0726	0741	0836	0906	0936	1006	1036	1106	1136	1206	1236	1306	1336	1418	1448	1518	1548	1618	1648	1743
Lackham Wiltshire College	0639	0729	0744	0839	0909	0939	1009	1039	1109	1139	1209	1239	1309	1339	1421	1451	1521	1551	1621	1651	1746
Lacock The George Inn	0642	0732	0747	0842	0912	0942	1012	1042	1112	1142	1212	1242	1312	1342	1424	1454	1524	1554	1624	1654	1749
Beaenacre Bus Shelter	0646	0736	0751	0846	0916	0946	1016	1046	1116	1146	1216	1246	1316	1346	1428	1458	1528	1558	1628	1658	1753
Melksham Market Place	0653	0746	0803	0856	0926	0956	1026	1056	1126	1156	1226	1256	1326	1356	1439	1509M	1539	1609	1639	1709	1804
Semington Somerset Arms	0658	0752	0809	0902	0932	1002	1032	1102	1132	1202	1232	1302	1332	1402	1445	1518	1545	1615	1645	1715	1810
Castlemead Leap Gate	▼	0800	▼	0909	▼	1009	▼	1109	▼	1209	▼	1309	▼	1409	▼	1525	▼	1622	▼	1722	1817
Hilpertown Marsh Horse Road	0707	0810	0818	0915	0942	1015	1042	1115	1142	1215	1242	1315	1342	1415	1455	1531	1555	1628	1655	1728	1823
Trowbridge Town Hall	0715	0820	0828	0925	0952	1025	1052	1125	1152	1225	1252	1325	1352	1421	1506	1539	1606	1639	1706	1739	1829
Trowbridge Trinity Church	0718	0823	0830	0927	0954	1027	1054	1127	1154	1227	1254	1327	1354		1509	1542	1609	1642	1709	1742	
Frome Rd for Wiltshire College	0722	0830	0838	0931	0958	1031	1058	1131	1158	1231	1258	1331	1358		1515	1548	1615	1648	1715	1748	
Southwick Church	0724	0832		0933	1000	1033	1100	1133	1200	1233	1300	1333	1400		1517	1550	1617	1650	1717	1750	
Rode Memorial Hall	0729	0837		▼	1005	▼	1105	▼	1205	▼	1305	▼	1405		1522	▼	1622	▼	1722	▼	
Beckington Bus Shelter	0735	0843		0941	1011	1041	1111	1141	1211	1241	1311	1341	1411		1528	1558	1628	1658	1728	1758	
Oldford Jay's Kitchen	0738	0846		0944	1014	1044	1114	1144	1214	1244	1314	1344	1414		1531	1601	1631	1701	1731	1801	
Frome Market Place	0743	0851		0949	1019	1049	1119	1149	1219	1249	1319	1349	1419		1536	1606	1636	1706	1736	1806	

Buses towards Chippenham

Frome Market Place	0655	0725	0755				0930	1000	1030	1100	1130	1200	1230	1300	1330	1400	1445	1545	1615	1645	1730
Frome College Bath Road	0657	0727	0757				0932	1002	1032	1102	1132	1202	1232	1302	1332	1402	1447	1547	1617	1647	1732
Oldford Jay's Kitchen	0659	0729	0759				0934	1004	1034	1104	1134	1204	1234	1304	1334	1404	1449	1549	1619	1649	1734
Beckington Bus Shelter	0702	0732	0802				0937	1007	1037	1107	1137	1207	1237	1307	1337	1407	1452	1552	1622	1652	1737
Rode Memorial Hall	0708	▼	0808				▼	1012	▼	1112	▼	1212	▼	1312	▼	1412	1457	▼	1627	▼	1742
Southwick Church	0714	0739	0814				0944	1018	1044	1118	1144	1218	1244	1318	1344	1418	1503	1559	1633	1659	1748
Frome Rd for Wiltshire College	0716	0741	0816				0946	1020	1046	1120	1146	1220	1246	1320	1346	1420	1505	1602	1636	1702	1751
Trowbridge Trinity Church	0721	0746	0821				0951	1025	1051	1125	1151	1225	1251	1325	1351	1425	1512	1609	1643	1709	1756
Trowbridge Town Hall	0638	0730	0755	0830	0900	0933	1000	1033	1100	1133	1200	1233	1300	1333	1400	1433	1520	1620	1650	1720	1800
Hilpertown Marsh Horse Road	0644	0737	0802	0837	0907	0940	1007	1040	1107	1140	1207	1240	1307	1340	1407	1440	1527	1627	1657	1727	1807
Castlemead Leap Gate	0650	▼	0809	▼	0913	▼	1013	▼	1113	▼	1213	▼	1313	▼	1413	▼	1533	1633	▼	1733	▼
Semington Somerset Arms	0656	0746S	0815	0846	0919	0949	1019	1049	1119	1149	1219	1249	1319	1349	1419	1449	1539	1639	1706	1739	1816
Melksham Market Place	0702	0801	0824	0855	0928	0958	1028	1058	1128	1158	1228	1258	1328	1358	1428	1458	1547	1647	1714	1747	1824
Beaenacre Bus Shelter	0709	0809	0831	0902	0935	1005	1035	1105	1135	1205	1235	1305	1335	1405	1435	1505	1554	1654	1721	1754	1831
Lacock The George Inn	0712	0812	0834	0905	0938	1008	1038	1108	1138	1208	1238	1308	1338	1408	1438	1508	1557	1657	1724	1757	1834
Lackham Wiltshire College	0716	0816	0838	0909	0942	1012	1042	1112	1142	1212	1242	1312	1342	1412	1442	1512	1601	1701	1728	1801	1838
Chippenham Sainsbury's	0719	0819	0841	0912	0945	1015	1045	1115	1145	1215	1245	1315	1345	1415	1445	1515	1604	1704	1731	1804	1841
Chippenham Hospital	0722	0823	0844	0915	0948	1018	1048	1118	1148	1218	1248	1318	1348	1418	1448	1518	1607	1707	1734	1807	1844
Chippenham Railway Station	0727	0831	0852	0919	▼	▼	▼	▼	▼	▼	▼	▼	▼	▼	▼	▼	▼	1710	▼	▼	▼
Chippenham Bus Station	0732	0837	0858	0925	0952	1022	1052	1122	1152	1222	1252	1322	1352	1422	1452	1522	1611	TB	1738	1811	1848

Saturday

Buses towards Frome

Chippenham Bus Station Bay 5	0800	0900	1000	1100	1200	1300	1400	1530	1630	1730	
Chippenham Railway Station	▼	▼	▼	▼	▼	▼	▼	1535	1635	1735	
Chippenham Hospital	0803	0903	1003	1103	1203	1303	1403	1538	1638	1738	
Chippenham Sainsbury's	0806	0906	1006	1106	1206	1306	1406	1541	1641	1741	
Lacock The George Inn	0812	0912	1012	1112	1212	1312	1412	1547	1647	1747	
Beaenacre Bus Shelter	0816	0916	1016	1116	1216	1316	1416	1551	1651	1751	
Melksham Market Place	0705	0826	0926	1026	1126	1226	1326	1426	1601	1701	1759
Semington Somerset Arms	0711	0832	0932	1032	1132	1232	1332	1432	1607	1707	1804
Castlemead Leap Gate	0717	0839	0939	1039	1139	1239	1339	1439	1614	1714	1810
Hilpertown Marsh Horse Road	0722	0845	0945	1045	1145	1245	1345	1445	1620	1720	1815
Trowbridge Town Hall	0728	0854	0954	1054	1154	1254	1354	1454	1629	1729	1821
Trowbridge Trinity Church	0730	0856	0956	1056	1156	1256	1356	1456	1631	1731	
Frome Rd for Wiltshire College	0734	0900	1000	1100	1200	1300	1400	1500	1635	1735	
Southwick Church	0736	0902	1002	1102	1202	1302	1402	1502	1637	1737	
Rode Memorial Hall	0741	0907	1007	1107	1207	1307	1407	1507	1642	1742	
Beckington Bus Shelter	0746	0913	1013	1113	1213	1313	1413	1513	1648	1748	
Oldford Jay's Kitchen	0749	0916	1016	1116	1216	1316	1416	1516	1651	1751	
Frome Market Place	0754	0921	1021	1121	1221	1321	1421	1521	1656	1756	

Buses towards Chippenham

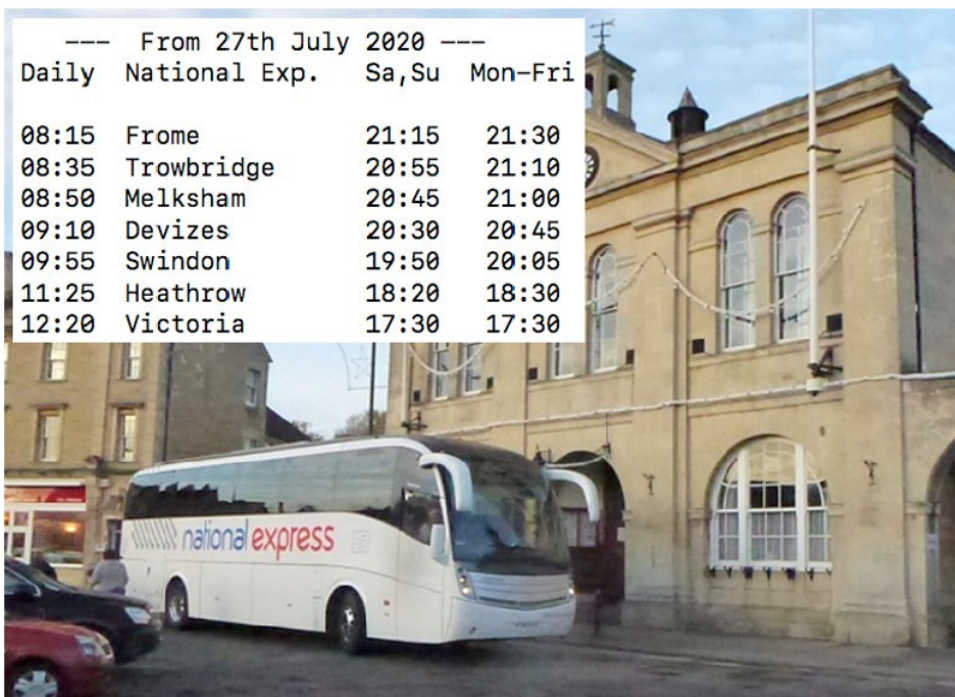
Frome Market Place	0710	0810	0935	1035	1135	1235	1335	1435	1535	1705
Oldford Jay's Kitchen	0714	0814	0939	1039	1139	1239	1339	1439	1539	1709
Beckington Bus Shelter	0717	0817	0942	1042	1142	1242	1342	1442	1542	1712
Rode Memorial Hall	0722	0822	0947	1047	1147	1247	1347	1447	1547	1717
Southwick Church	0728	0828	0953	1053	1153	1253	1353	1453	1553	1723
Frome Rd for Wiltshire College	0730	0830	0955	1055	1155	1255	1355	1455	1555	1725
Trowbridge Trinity Church	0734	0834	0959	1059	1159	1259	1359	1459	1559	1729
Trowbridge Town Hall *	0702	0742	0840	1007	1107	1207	1307	1407	1507	1607
Hilpertown Marsh Horse Road	0709	0749	0847	1014	1114	1214	1314	1414	1514	1614
Castlemead Leap Gate	0715	0755	0853	1020	1120	1220	1320	1420	1520	1620
Semington Somerset Arms	0721	0801	0859	1026	1126	1226	1326	1426	1526	1626
Melksham Market Place	0729	0810	0908	1035	1135	1235	1335	1435	1535	1635
Beaenacre Bus Shelter	0735	0817	0915	1042	1142	1242	1342	1442	1542	1642
Lacock The George Inn	0738	0820	0918	1045	1145	1245	1345	1445	1545	1645
Chippenham Sainsbury's	0744	0827	0925	1052	1152	1252	1352	1452	1552	1652
Chippenham Hospital	0747	0830	0928	1055	1155	1255	1355	1455	1555	1655
Chippenham Railway Station	0751	0834								
Chippenham Bus Station	0755	0838	0933	1100	1200	1300	1400	1500	1600	1700

National Express, 68 and 69 – September 2020

Frome – Trowbridge – Melksham – Devizes – Swindon – London
correlated by Melksham Rail User Group, operated by National Express

--- From 27th July 2020 ---

Daily	National Exp.	Sa,Su	Mon-Fri
08:15	Frome	21:15	21:30
08:35	Trowbridge	20:55	21:10
08:50	Melksham	20:45	21:00
09:10	Devizes	20:30	20:45
09:55	Swindon	19:50	20:05
11:25	Heathrow	18:20	18:30
12:20	Victoria	17:30	17:30



Coach now calls
on Spa Road
in
Melksham

Not at
Town Hall

Bookable at
the TIC

Bus Route 68/69 – September 2020

Corsham – Melksham – Holt – Bradford-on-Avon – Trowbridge
correlated by Melksham Rail User Group, operated by Faresaver
See overleaf for service x34 Melksham to Trowbridge via Semington

Monday - Friday	68	69	68	69	69	68	68	x69	Monday - Friday	x69	69	69	69	69	68	68	68
CORSHAM, Newlands Road	720	—	—	1005	1205	1305	—	—	TROWBRIDGE, Town Hall	—	850	1110	1310	1410	1600	1720	1735
Gastard, Harp & Crown	724	—	—	1010	1210	1310	—	—	Trowbridge, Fore Street	—	851	1111	1311	1411	1601	1721	1736
Whitley, Corsham Road	727	—	—	1014	1214	1314	—	—	Trowbridge, Trinity Church	—	853	1113	1313	1413	1604	B	B
Atworth, Purlpit	730	—	—	1017	1217	1317	—	—	Bradford on Avon, Town Bridge	746	902	1122	1322	1422	B	B	B
Atworth, Clock	732	—	—	1019	R	R	—	—	Staverton, Old Bear	—	—	—	—	—	1615	1730	1745
Shaw, Church	737	—	—	1023	1221	1321	—	—	Holt, Three Lions	751	908	1128	1328	1428	1620	1735	R
Melksham, Market Place	745	—	855	1033	1233	1333	1635	1705	Holt, Station Road (Avonfield)	—	910	R	R	R	R	R	—
Broughton Gifford, Fox	754	—	903	1041	1241	1341	1643	1711	Broughton Gifford, Fox	756	914	1133	1333	1433	1625	1740	R
Holt, Station Road (Avonfield)	—	—	908	R	R	R	—	—	Melksham, Market Place	805x	925	1143	1343	1443	1635	1750	—
Holt, Three Lions	800	900	911	1046	1246	1346	1648	1715	Shaw, Church	—	931	1148	1348	1448	—	1755	—
Staverton, Old Bear	808	—	916	—	—	—	1653	1721	Atworth, Clock	—	935	—	R	—	—	R	—
Bradford on Avon, Town Bridge	B	905	B	1052	1252	1352	B	B	Atworth, Purlpit	—	937	—	1352	R	—	R	—
Trowbridge, Trinity Church	823m	—	—	1059	1259	1359	B	B	Whitley, Corsham Road	—	940	1151	1355	1451	—	1757	—
TROWBRIDGE, Town Hall	818m	—	928	1104	1304	1404	1705	1733	Gastard, Harp & Crown	—	944	1155	1359	1455	—	1801	—
									CORSHAM, Newlands Road	—	950	1200	1404	1500#	—	1806	—

Saturday	68	69	69	68	x69	Saturday	x69	69	69	69	68
CORSHAM, Newlands Road	—	955	1205	1440	1630	TROWBRIDGE, Town Hall	—	1100	1310	1535	1725
Gastard, Harp & Crown	—	1000	1210	1445	1635	Trowbridge, Fore Street	—	1101	1311	1536	1726
Whitley, Corsham Road	—	1004	1214	1449	1639	Trowbridge, Trinity Church	—	1103	1313	1538	—
Atworth, Purlpit	—	1007	1217	R	R	Bradford on Avon, Town Bridge	811	1112	1322	1546	—
Atworth, Clock	—	1009	1219	R	R	Staverton, Old Bear	—	—	—	—	1735
Shaw, Church	—	1013	1223	1454	1644	Holt, Three Lions	816	1118	1328	1551	1740
Melksham, Market Place	855	1023	1233	1500	1650	Holt, Station Road (Avonfield)	—	R	R	R	R
Broughton Gifford, Fox	903	1031	1241	1508	1658	Broughton Gifford, Fox	821	1123	1333	1556	1745
Holt, Station Road (Avonfield)	908	R	R	—	—	Melksham, Market Place	830x	1133	1343	1606	1755
Holt, Three Lions	911	1036	1246	1512	1702	Shaw, Church	—	1139	1349	1612	1801
Staverton, Old Bear	916	—	—	—	1707	Atworth, Clock	—	1143	R	R	R
Bradford on Avon, Town Bridge	B	1042	1252	1518	B	Atworth, Purlpit	—	1145	1353	R	R
Trowbridge, Trinity Church (for	B	1049	1259	1525	B	Whitley, Corsham Road	—	1148	1356	1614	1803
TROWBRIDGE, Town Hall	928	1054	1304	1530	1718	Gastard, Harp & Crown	—	1152	1359	1617	1806
						CORSHAM, Newlands Road	—	1157	1404	1622	1811

Key:

- R** - The bus will only call at this point if required by passengers on the bus.
- m** - This journey is operated by the Frome Minibuses bus company.
- @** - Sets down on Pickwick Road, NOT Newlands Road
- B** - This journey runs via Trowbridge Hospital and Staverton – NOT Bradford.
- m** - Sets down at Manvers St. in Trowbridge Town Centre, then continues to Trinity Church (for John of Gaunt).
- x** - Terminates at Lowbourn in the town centre, then continues as service 14 to Melksham Forest.
- ▼** - This journey is operated by Libra Travel and continues to Bradford on Avon rail station.

Melksham Town Bus – as at 1st September 2020

Saturday service – Monday to Friday overleaf

also Service x76

Marlborough – Calne – Melksham – Bath – Royal United Hospital

correlated by Melksham Rail User Group, operated by Buses of Swindon

for other buses to Bath, see services 271, 272 and 273

Timetable

Route: 14 15 Melksham Town

Saturday

23-06-2018

14

	268-2	1	1	1	1	1	1	1	1	1
ASDA Supermarket		0935	1035	1135	1235	1335	1440	1540	1620	1700
Sainsbury's		0939	1039	1139	1239	1339	1444	1544	1624	1704
Lowbourn - Buds	0832	0942	1042	1142	1242	1342	1447	1547	1627	1707
Forest Road	0834	0944	1044	1144	1244	1344	1449	1549	1629	1709
Methuen Avenue	0836	0946	1046	1146	1246	1346	1451	1551	1631	R
Melksham Forest	0838	0948	1048	1148	1248	1348	1453	1553	1633	1713
Sherwood Avenue	0840	0950	1050	1150	1250	1350	1455	1555	1635	1715
Blackmore Road	0842	0952	1052	1152	1252	1352	1457	1557	1637	1717
Queensway	0844	0954	1054	1154	1254	1354	1459	1559	1639	1719
Snowberry Lane	0846	0956	1056	1156	1256	1356	1501	1601	1641	1721
Spa Road -Hospital	0849	0959	1059	1159	1259	↓	↓	↓	↓	↓
Market Place	0851	1001	1101	1201	1301					
Sainsbury's	–	1003	1103	1203	1303	↓	↓	↓	↓	↓
ASDA Supermarket	–	R	1107	–	1307					

14

	1	1	1							
ASDA Supermarket	0915	1112	1312		↓	↓	↓	↓	↓	
Shumhold	0917	1114	1314							
Dunch Lane	0918	1115	1315		↓	↓	↓	↓	↓	
Addison Road	0919	1116	1316							
Southbrook Road	0920	1117	1317		↓	↓	↓	↓	↓	
Avon Road	0927	1124	1324							
Granville Road	0929	1126	1326		↓	↓	↓	↓	↓	
ASDA Supermarket	0935	1132	1332							

15

	1	1								
ASDA Supermarket		1205			↓	↓	↓	↓	↓	
Sainsbury's		1208			↓	↓	↓	↓	↓	
Market Pl - Kings Arms		–								
Spa Rd -for hospital										
Holbrook Vale	1012	1212			↓	↓	↓	↓	↓	
Snowberry - Surgery	1018	1218			1356	1501	1601	1641	1721	
Eastern Way - Thyme Rd	1019	1219			1357	1502	1602	1642	1722	
Skylark Road	1021	1221			R	R	R	R	R	
Sandridge Rd Coop	1023	1223			1359	1504	1604	1644	1724	
Opposite Buds	1027	1227			1403	1508	1608	1648	1728	
Bank St for Sainsbury's	R	R			–	1509	1609	1649	C	
ASDA Supermarket	1032	1232			–	1513	1613	1653	–	

R Request stop- Only calls at this point if requested to do so by a passenger already on the bus
C Continues to Market Place

For up to date information about this and other services please visit our website at www.fromebus.co.uk

Timetable Route x76

Mondays to Fridays except public holidays

route number	X76
Marlborough High Street	0910
Barton Park Morris Road	0913
Fyfield A4, The Stables	0917
West Kennett opp Telephone Box	0920
Beckhampton opp Waggon & Horses	0924
Cherhill A4, opp Black Horse	0928
Lower Compton A4, opp Compton Turn	0929
Quemerford Post Office	0931
Calne The Strand, Town Hall	0935
Derry Hill opp School	0940
Bromham The Greyhound	0945
Sandridge Common Bromham Turn	0946
Melksham Forest Sandridge Co-op	0948
Melksham Bank Street, Old Bear	0952
Atworth Clock Tower	1007
Bathford The Crown	1018
Bath Abbey, Orange Grove	1031

Continues to Royal United Hospital on request

Bath | Melksham | Calne | Marlborough

Mondays to Fridays except public holidays

route number	X76
Bath Royal United Hospital	1305
Bath Abbey, Orange Grove	1325
Bathford The Crown	1335
Atworth opp Clock Tower	1345
Melksham Bank Street, nr The Bear	1357
Melksham Forest Sandridge Road, Foresters Arms	1402
Sandridge Common Bromham Turn	1404
Bromham opp The Greyhound	1407
Derry Hill School	1412
Calne The Strand, Bank House	1420
Quemerford Post Office	1423
Lower Compton Turn A4	1425
Beckhampton Waggon & Horses	1429
West Kennett A4, Telephone Box	1434
Fyfield A4, Garage	1437
Marlborough High Street	1447

Melksham

rail user group

Melksham Rail User Group to become Melksham Transport User Group?

On the table for our September meeting - a proposal to rename the Melksham Rail User Group to the "**Melksham Transport User Group**". It's been informally discussed amongst our officers and active team.

We are so much more bus, cycle and walking concerned now – indeed you'll find 6 pages of bus and coach timetable, and just 2 pages of train timetable in this newsletter – though other news remains predominantly rail. Working with local authorities, councils and bus as well as train operators, and with many of us travelling by bus just as much as by train, our name should reflect our members and goals.

We would / will still very much support TransWilts. TransWilts have moved on from being a community group which was founded by MRUG volunteers. They are now rail and local government lead, with a salaried staff, Department for Transport designation, franchise and council funded, and policies which guide their activities. Whilst they can be (and are) innovative, they cannot easily be maverick any longer, even if that would be in Melksham's interest.

We will also remain the Station Friends group for Melksham Station – supporting and marketing station use, assisting with surveys, with our members helping as volunteers in weeding, cleaning, informing passengers, etc, in the station area. Also keeping an eye open for safety, security and other issues that need attention and acting / reporting as appropriate. With a staffed cafe due to open in the early autumn, with TransWilts contracting or employing an operator, we anticipate that operator will be willing, able, and logical to look after daily attentions at the station which a volunteer group might do at totally unstaffed locations.

Putting some scale ...

* Passenger numbers have risen from 3,000 to 75,000 per annum and are forecast to rise beyond 300,000 in the next few years

* MRUG is / has been run purely by its volunteers and will continue as MTUG in that way, with an income of around £1,300 per annum. TransWilts annual report for 2019/20 reports an income of £87,000 for the year. See <https://transwilts.org>

MRUG -> MTUG:

- looking after local community support and marketing
- all Melksham sustainable transport.

TransWilts CIC:

- medium, long term and big projects for rail in Wiltshire
- operating company for the Melksham Hub

Train running report for August 2020

Limited data feeds have made overall figures for the month less than reliable. On several occasions during the month, trains were diverted off the direct Westbury to Reading line and on one day that resulted in the cancellation of our local trains. Signal and train faults also caused a few cancellations – good to see that GWR provided an alternative bus service for the evening peak train when that was cancelled. We hope to restore data feeds for September.

Find us at ...

<http://melkshamtrains> <http://www.mrug.org.uk>
<https://www.facebook.com/MelkshamRUG> <https://twitter.com/MelkshamRUG>

Peter Blackburn – MRUG Chair
John Hamley – MRUG Secretary

Graham Ellis – MRUG Vice Chair
Judith Gradwell – MRUG Treasurer